



Health and Wellbeing Board

Date: Wednesday, 9 June 2021

Time: 10.00 am

Venue: Council Chamber, Level 2, Town Hall Extension

This is a **supplementary agenda** and contains information that was not available at the time that the original agenda was published.

Access to the Council Chamber

Public access to the Council Chamber is on Level 2 of the Town Hall Extension, using the lift or stairs in the lobby of the Mount Street entrance to the Extension. **There is no public access from the Lloyd Street entrances of the Extension.**

Face Masks / Track and Trace

Anyone attending the meeting is encouraged to wear a face mask for the duration of your time in the building and to provide contact details for track and trace purposes.

Filming and broadcast of the meeting

Meetings of the Health and Wellbeing Board are 'webcast'. These meetings are filmed and broadcast live on the Internet. If you attend this meeting you should be aware that you might be filmed and included in that transmission.

Membership of the Health and Wellbeing Board

Councillor Richard Leese, Leader of the Council (Chair)

Councillor Midgley, Executive Member for Adult, Health and Wellbeing (MCC)

Councillor Bridges, Executive Member for Children's Services (MCC)

Dr Ruth Bromley, Chair Manchester Health and Care Commissioning

Dr Denis Colligan, GP Member (North) Manchester Health and Care Commissioning

Dr Murugesan Raja GP Member (Central) Manchester Health and Care Commissioning

Dr Geeta Wadhwa GP member (South) Manchester Health and Care Commissioning

Katy Calvin-Thomas - Manchester Local Care Organisation

Kathy Cowell, Chair, Manchester University NHS Foundation Trust

Michael Luger, Chair of Northern Care Alliance

Rupert Nichols, Chair, Greater Manchester Mental Health NHS Foundation Trust

Mike Wild, Voluntary and Community Sector representative

Vicky Szulist, Chair, Healthwatch

Dr Tracey Vell, Primary Care representative - Local Medical Committee

Paul Marshall, Strategic Director of Children's Services

David Regan, Director of Public Health

Bernadette Enright, Director of Adult Social Services
Dr Vish Mehra, Central Primary Care Manchester
Dr Amjad Ahmed, Northern Health GP Provider Organisation
Dr Doug Jeffrey, (South) Primary Care Manchester Partnership

Supplementary Agenda

- | | |
|---|--------|
| 5. COVID-19 Update and Vaccination Programme Update | 3 - 22 |
| The report of the Director of Public Health and Medical Director, Manchester Health and Care Commissioning is enclosed. | |

Further Information

For help, advice and information about this meeting please contact the Committee Officer:

Andrew Woods
Tel: 0161 234 3011
Email: andrew.woods@manchester.gov.uk

This supplementary agenda was issued on **Wednesday, 9 June 2021** by the Governance and Scrutiny Support Unit, Manchester City Council, Level 3, Town Hall Extension (Lloyd Street Elevation), Manchester M60 2LA

This page is intentionally left blank

COVID-19 Update

Health and Wellbeing Board

David Regan, Director of Public Health
Dr Manisha Kumar, Medical Director, MHCC

9th June 2021

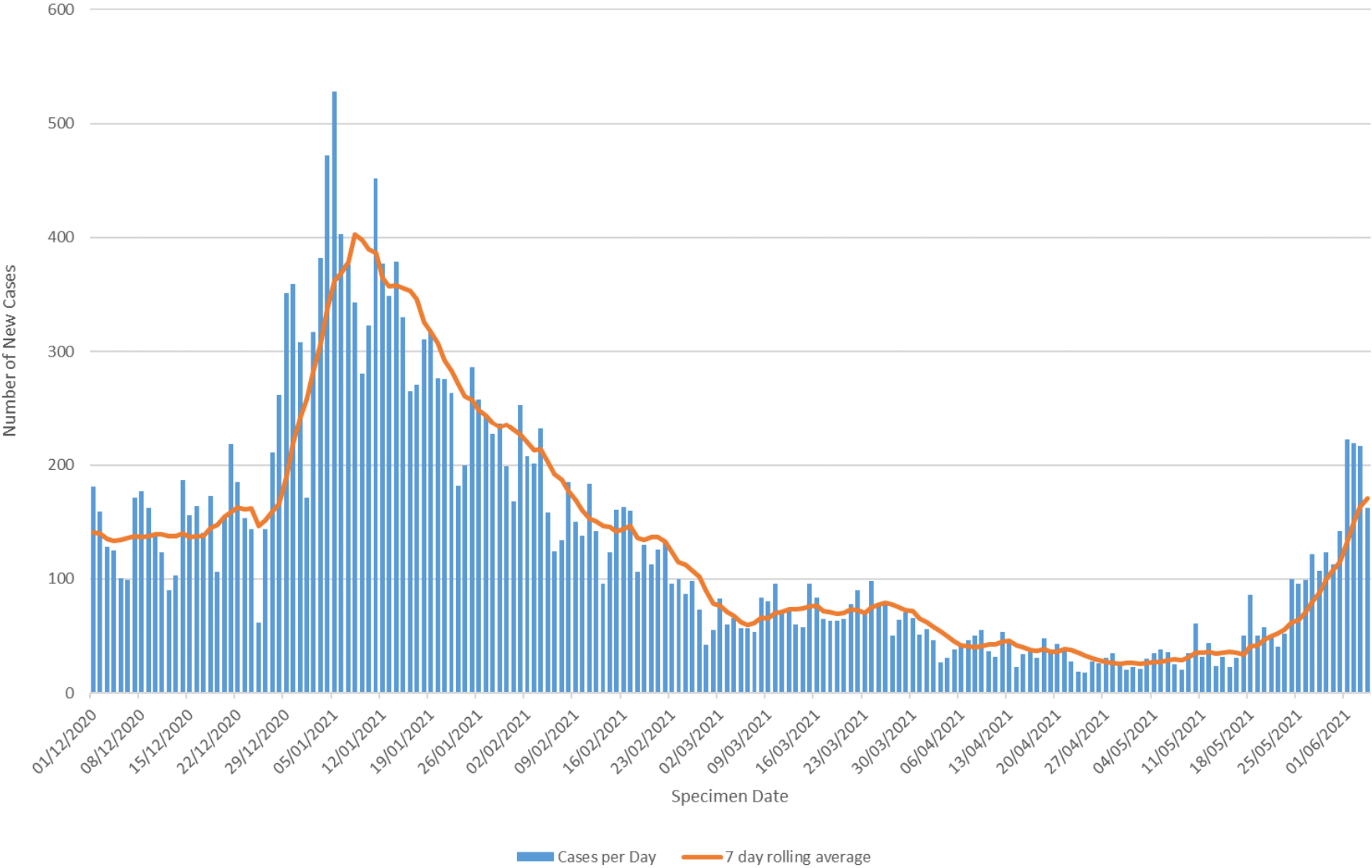
Headline Figures

7-days ending Friday 4 June 2021

Measure	All Ages	60+
Total number of new cases	1,198	36
Average number of new cases per day	171	5
Case detection rate per 100,000	216.7	50.6
7-day rate of change (%)	94.2%	260.0

Note: Figures for 2-4 June are provisional and subject to possible upward revision

Epidemic curve of daily confirmed COVID-19 cases over time in Manchester, by specimen date (1 December 2020 to 4 June 2021)



Number of confirmed cases of COVID-19 and rate per 100,000 population in Manchester, by age group: 4 June 2020 (7 day total)

	Number of cases	Rate per 100,000	Abs. change	7-day rate of change*
Pre-school (0-4 years)	19	51.2	-1	-5.0%
Primary school (5-11 years)	76	151.7	27	55.1%
Secondary school (12-16 years)	139	459.9	44	46.3%
Higher education (17-21 years)	149	289.8	80	115.9%
Working age (22-64 years)	797	239.6	418	110.3%
Older people (65 years & over)	18	35.0	13	260.0%
Total (All ages)	1,198	216.7	581	94.2%

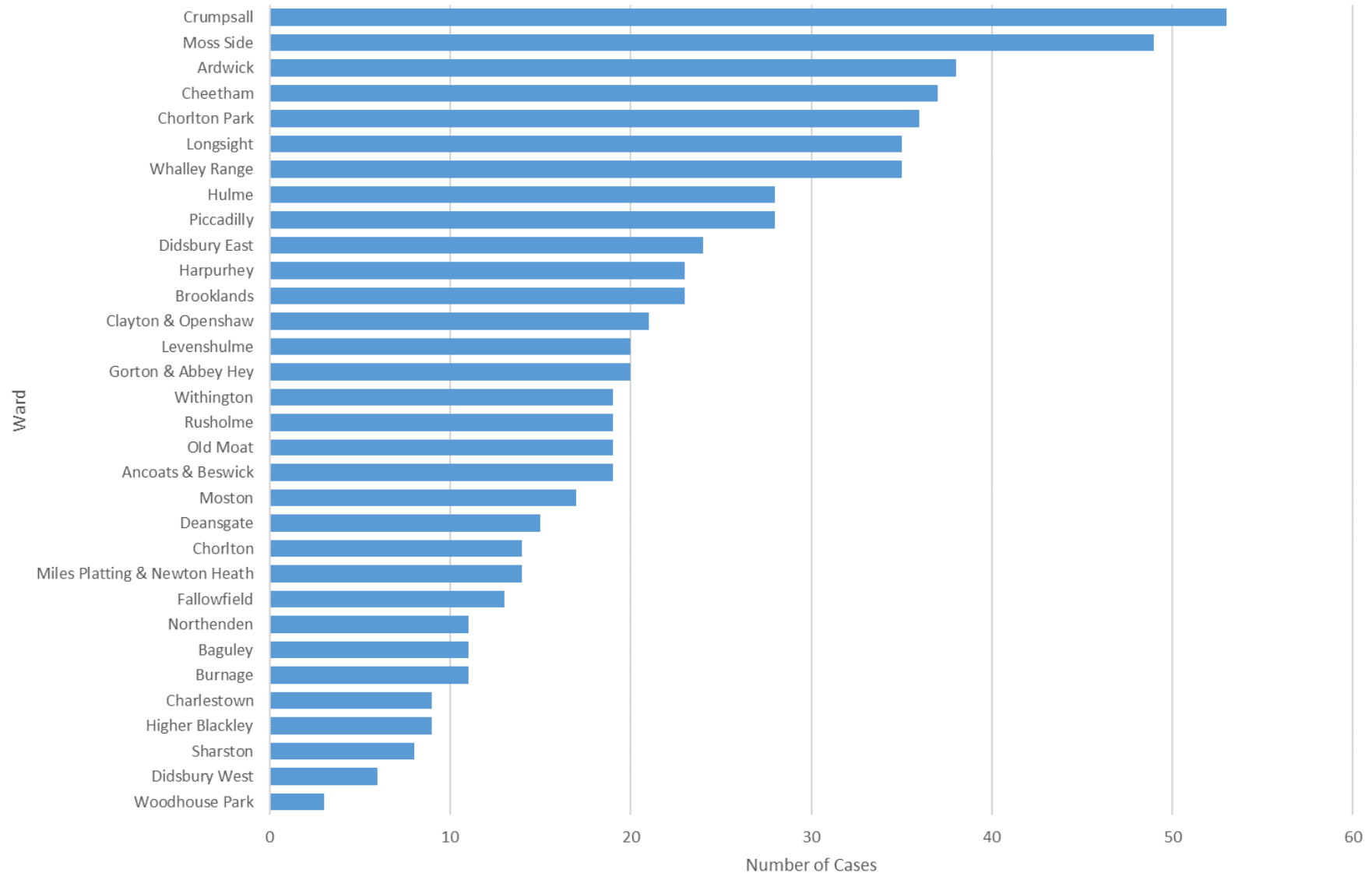
* Compared with prior 7-day period 22/05/2021 to 28/05/2021

Note: Figures for 2-4 June are provisional and subject to possible upward revision

Variants of concern (VOC) and variants under investigation (VUI) in Manchester residents based on genomic sequencing and provisional genotyping (01 Jan – 1 June 2021)

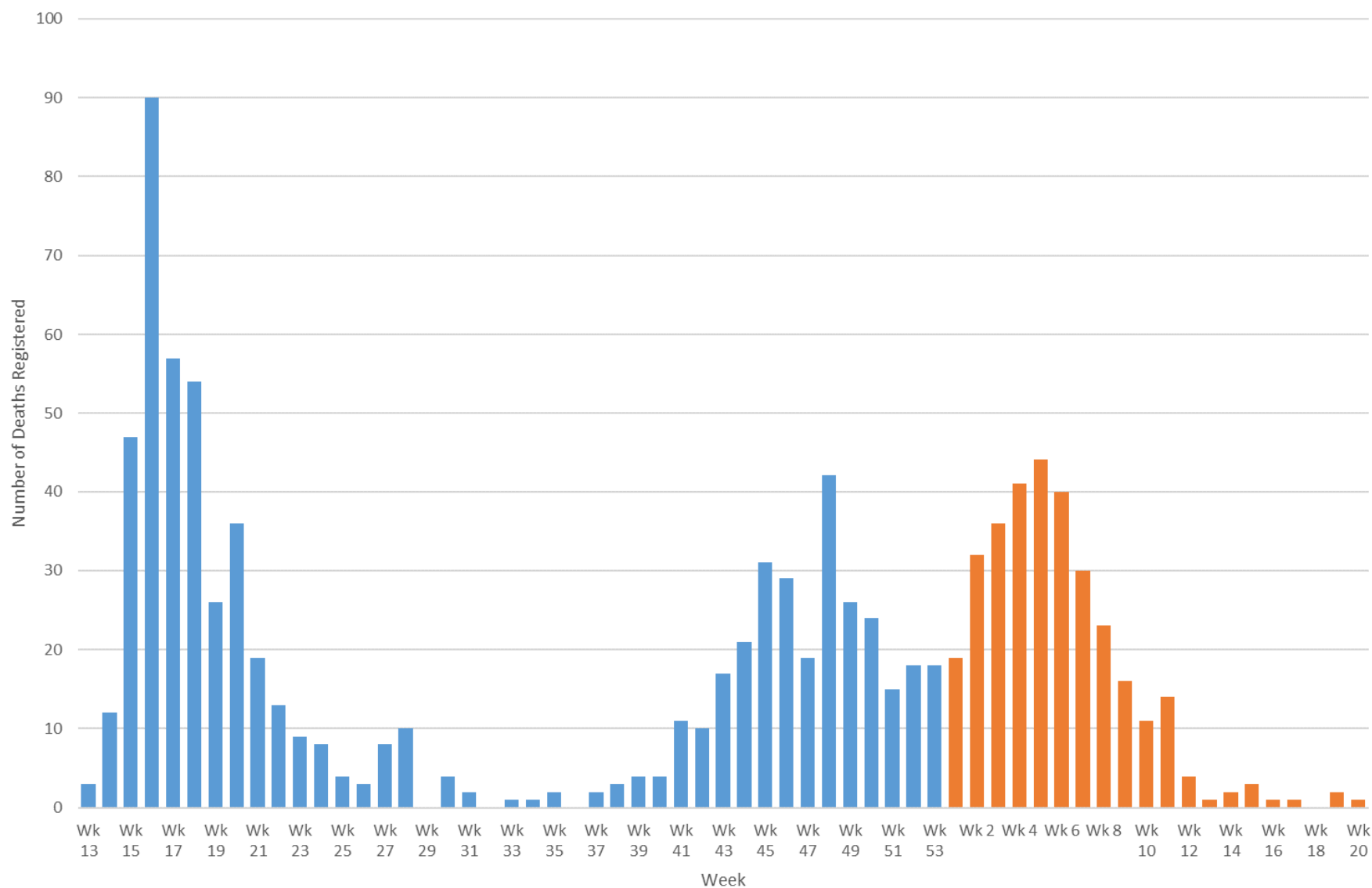
Lineage	Jan 21	Feb 21	Mar 21	Apr 21	May 21	June 21	Total
VOC-20DEC-01 (Alpha)	1,018	1,094	1,204	656	442	0	4,414
VOC-20DEC-02 (Beta)	0	3	7	2	1	0	13
VOC-21JAN-02 (Gamma)	0	0	0	1	0	0	1
VOC-21FEB-02	5	7	0	0	0	0	12
VOC-21APR-02 (Delta)	0	0	0	7	678	2	687
VUI-21JAN-01	2	0	1	0	0	0	3
VUI-21FEB-03	3	4	2	0	2	0	11
VUI-21FEB-04	0	1	3	4	0	0	8
VUI-21APR-01	0	0	2	4	0	0	6
VUI-21MAY-01	0	0	0	0	1	0	1
VUI-21MAY-02	0	0	0	1	0	0	1
Unclassified+E484K	0	0	2	5	0	0	7
Undetermined+E484K	0	1	0	0	1	0	2
Total	1,028	1,110	1,221	680	1,125	2	5,166

Number of VOC-21APR-02 Cases in Manchester Residents by Ward (01 Jan – 1 June 2021)



Total Number of Deaths Involving COVID-19 per Week in Manchester Residents

Deaths registered between Week 13 2020 and Week 20 2021



Manchester Action Plan

- Targeted communications and engagement
- Enhanced community testing and contact tracing
- Support to self-isolate (GM Pathfinder)
- Settings based outbreak management and advice
- Track data on a daily basis (e.g. over 60s rate and hospitalisations)
- Targeted Vaccination Drive

COVID-19 Vaccination programme update

9 June 2021

COVID-19 Vaccination Programme

Summary

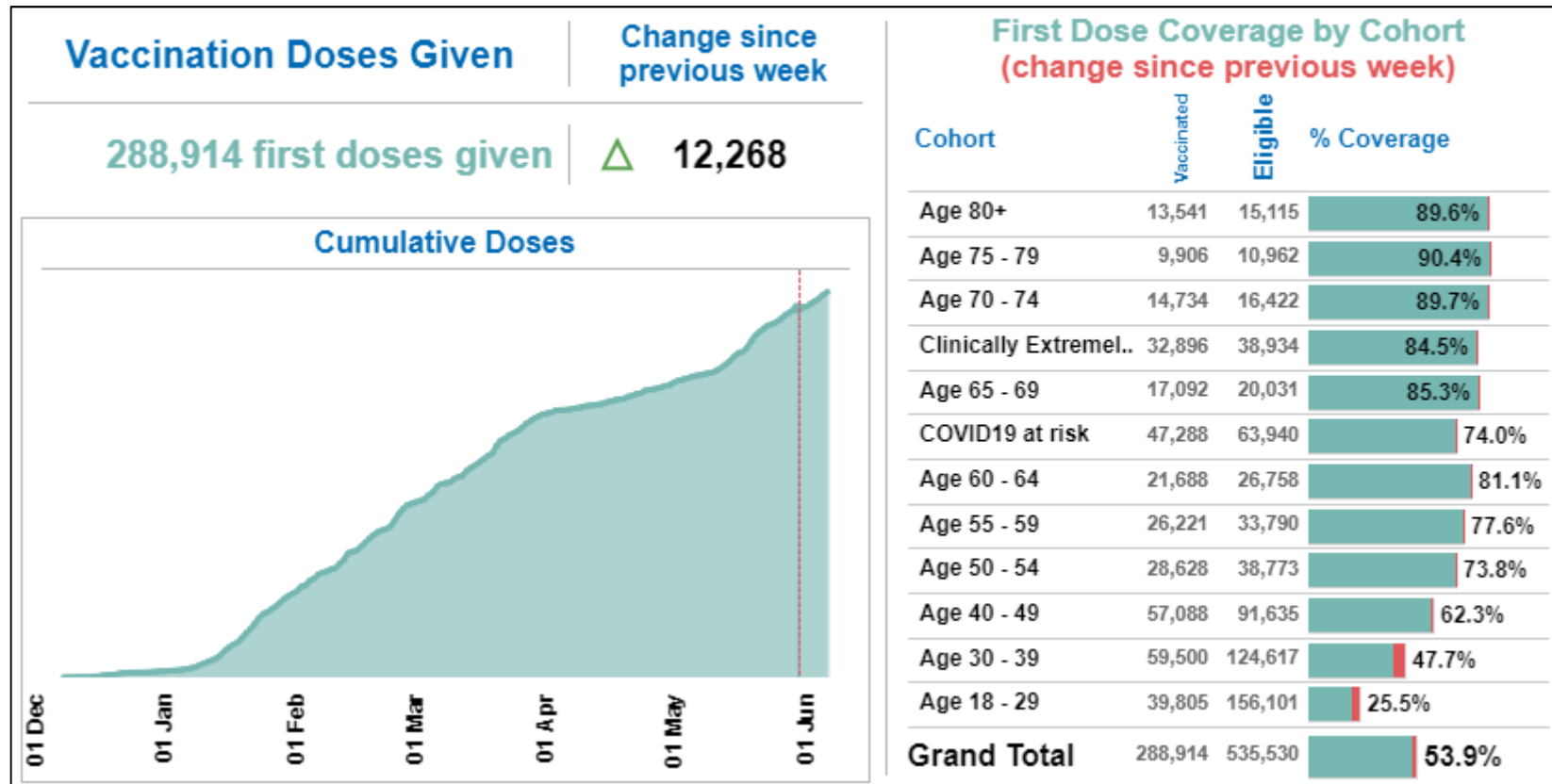
- Covid-19 vaccination coverage continues to increase rapidly in Manchester with **288,914** people having received the first dose of the vaccine as at 6 June 2021. Of this number, **170,446** have now received a second dose as well.
- This combination of providing first and second doses means that over the last month we have delivering the **highest numbers of weekly doses** since the beginning of the programme. Last week (28 May – 3 June) saw **25,929** vaccinations given.
- Partnership working remains at the heart of the programme with MHCC, MCC, MFT and MLCO working together, supported by c. **3000** local people who have volunteered to play their part.
- The last two months has seen us delivering our **Spring action plan** to increase coverage in those parts of the city where it was lowest, and to continue to reduce the gap in coverage between different communities in the city.
- Over the last week, we have been focussing further on inviting people from those wards at risk from the Delta variant.

Manchester population summary

- Just under 50% of the population of Manchester is aged under 25 – higher than the average for England as a whole (Source: ONS Mid-Year Estimates)
- Manchester is the 6th most deprived local authority in England. Around 43% of areas within the city are classed as being in the most deprived 10% of areas in England (Source: IMD 2019)
- The proportion of the population from a non-White British ethnic group is twice the average for English local authorities as a whole. The number of different ethnic groups living in Manchester is higher than any other UK city outside of London (Source: 2011 Census) .
- In 2019, just over a quarter of Manchester residents are estimated to have been born outside of the UK and just under 1 in 5 were non-UK nationals (Source: ONS Annual Population Survey)
- It is estimated that there are over 200 languages spoken in the city.
- Life expectancy at birth for both men and women in Manchester is the 5th lowest in England - a boy born in Manchester can expect to live over 8 years less than a boy born in the most affluent parts of England. A girls can expect to live around 7 years less.

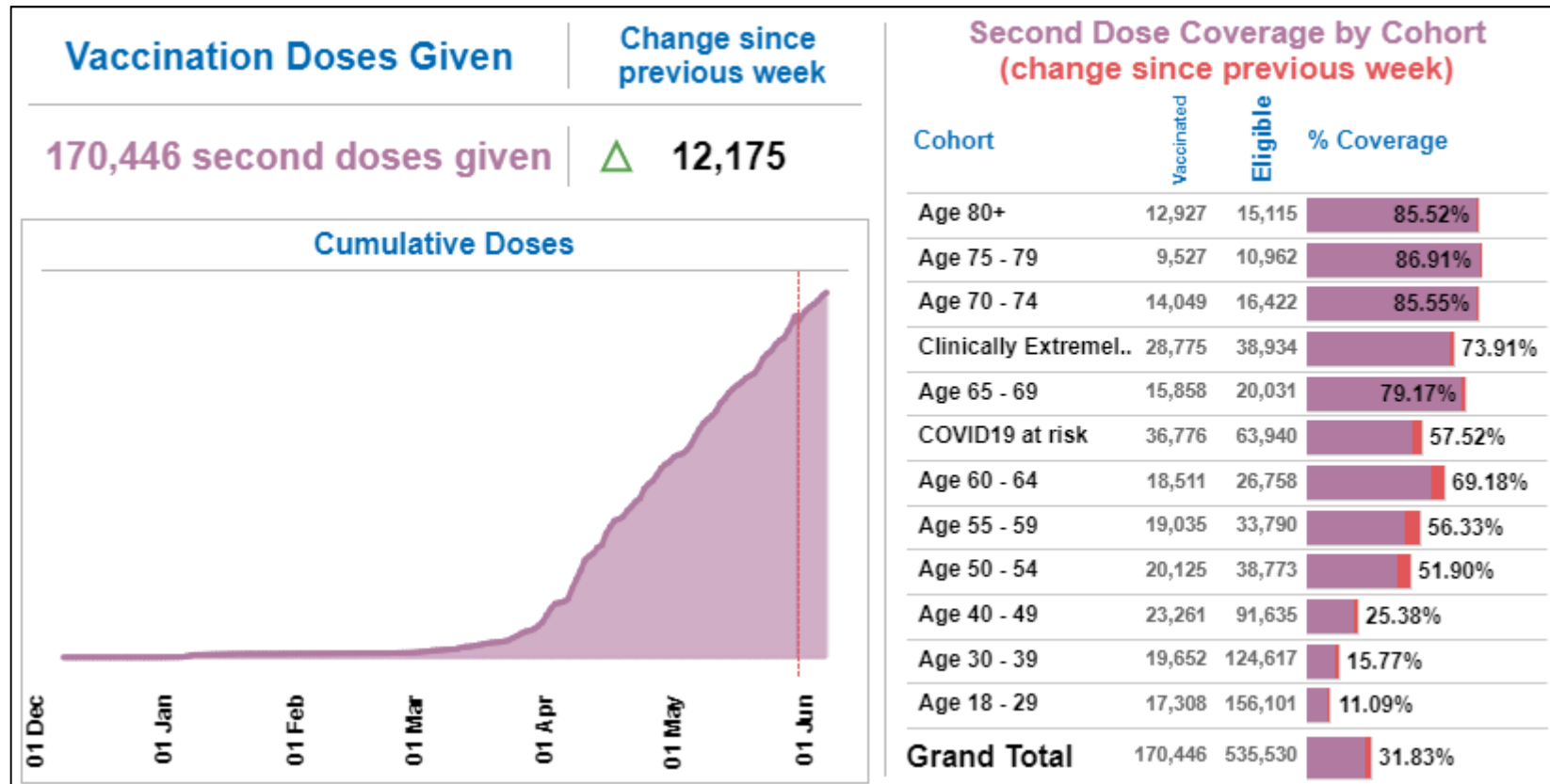
COVID-19 Vaccination Programme

First dose vaccine coverage as at 6 June 2021



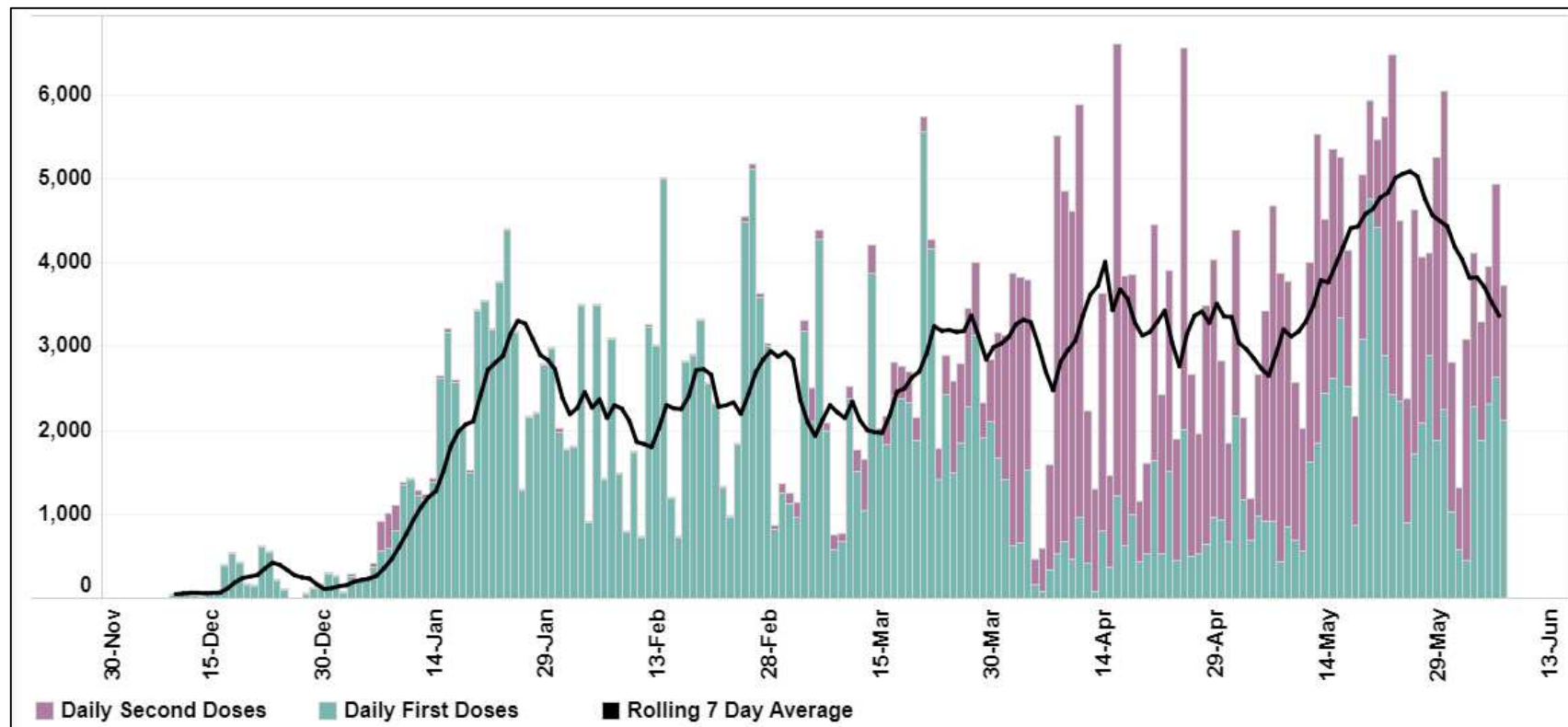
COVID-19 Vaccination Programme

Second dose vaccine coverage as at 6 June 2021



COVID-19 Vaccination Programme

Daily vaccination doses given from programme outset



COVID-19 Vaccination Programme

Targeting inequalities – Cohorts 1 - 9, last 2 weeks

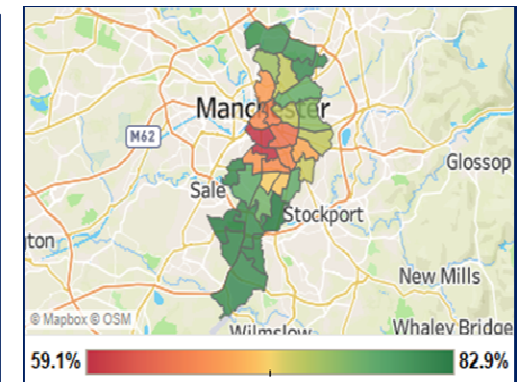
We aim for there to be no difference in coverage between white patients and those patients of other ethnic backgrounds. The table below tracks the difference, with a lower difference highlighting greater equality.

Ethnicity	Difference in Coverage from White Patients: 21 May	Difference in Coverage from White Patients: 04 Jun	Change
Arab	21.0%	19.1%	-1.9%
Any other Asian background	16.2%	15.0%	-1.1%
Pakistani	11.8%	10.7%	-1.1%
Bangladeshi	2.9%	1.9%	-1.0%
Any other ethnic group	21.9%	20.9%	-1.0%
Indian	3.5%	2.5%	-1.0%
White and Black African	23.8%	22.9%	-0.8%
Any other Black, African or Caribbean background	29.0%	28.2%	-0.8%
African	19.0%	18.3%	-0.7%
White and Asian	11.3%	10.8%	-0.5%
White and Black Caribbean	28.0%	27.4%	-0.5%
Any other Mixed or Multiple ethnic background	22.8%	22.3%	-0.5%
Declined to provide ethnicity status	14.3%	13.9%	-0.4%
Chinese	8.4%	8.3%	-0.1%
No record of ethnicity status	33.8%	33.9%	0.1%
Caribbean	25.7%	26.0%	0.3%

COVID-19 Vaccination Programme

Coverage by electoral ward – Cohorts 1 - 9, 3 June 2021

Ward	Vaccinated	Eligible	% Coverage (increase from 2 weeks ago)	Ward	Vaccinated	Eligible	% Coverage (increase from 2 weeks ago)
Didsbury East	5,197	6,277	82.8%	Gorton and Abbey Hey	5,472	7,526	72.7%
Brooklands	4,020	4,887	82.3%	Harpurhey	5,541	7,634	72.6%
Chorlton	4,560	5,601	81.4%	Ancoats and Beswick	3,124	4,305	72.6%
Baguley	5,584	6,863	81.4%	Levenshulme	5,033	6,977	72.1%
Sharston	5,415	6,668	81.2%	Old Moat	3,679	5,211	70.6%
Northenden	5,250	6,488	80.9%	Withington	3,328	4,736	70.3%
Moston	6,054	7,484	80.9%	Longsight	5,243	7,672	68.3%
Woodhouse Park	5,357	6,644	80.6%	Cheetham	4,209	6,229	67.6%
Higher Blackley	5,672	7,077	80.1%	Whalley Range	3,996	5,946	67.2%
Charlestown	5,696	7,146	79.7%	Fallowfield	2,962	4,470	66.3%
Chorlton Park	5,689	7,316	77.8%	Deansgate	1,061	1,602	66.2%
Burnage	5,827	7,505	77.6%	Rusholme	3,649	5,552	65.7%
Miles Platting and Newton ..	5,983	7,729	77.4%	Piccadilly	1,183	1,820	65.0%
Didsbury West	4,611	6,023	76.6%	Ardwick	4,070	6,360	64.0%
Clayton and Openshaw	5,507	7,315	75.3%	Moss Side	3,911	6,602	59.2%
Crumpsall	4,747	6,387	74.3%	Hulme	2,734	4,636	59.0%



Manchester GP records have been used to identify addresses. Ward residents not registered with a Manchester practice will therefore not be included in these figures

COVID-19 Vaccination Programme

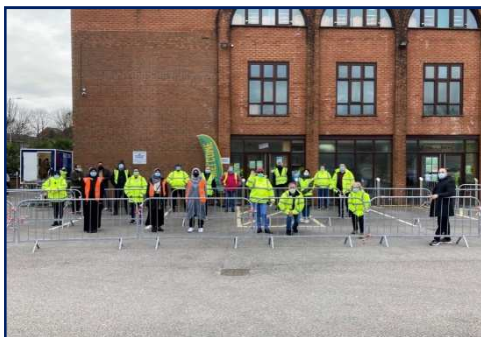
Targeting inequalities – Deprivation: Cohorts 1 - 9, 3 June 2021

Indices of Multiple Deprivation (IMD) rank each Lower Super Output Area (LSOA) based on their level of deprivation. The higher the deprivation score, the higher the level of deprivation.

First Dose Coverage by Deprivation				Change in First Dose Coverage by Deprivation from 2 weeks ago		
IMD Score	Vaccinated	Eligible	% Coverage (increase from 2 weeks ago)	IMD Score	Eligible	Change in Coverage from 2 weeks ago (Additional Patients Vaccinated)
0 - 9	5,043	5,911	85.3%	0 - 9	5,911	0.7% (+43)
10 - 19	19,776	24,179	81.8%	10 - 19	24,179	1.1% (+274)
20 - 29	33,638	45,043	74.7%	20 - 29	45,043	1.3% (+594)
30 - 39	23,672	32,135	73.7%	30 - 39	32,135	1.3% (+424)
40 - 49	32,511	44,470	73.1%	40 - 49	44,470	1.2% (+531)
50 - 59	29,492	39,866	74.0%	50 - 59	39,866	1.0% (+414)
60 - 69	13,604	18,455	73.7%	60 - 69	18,455	1.2% (+216)
70 - 79	8,119	10,823	75.0%	70 - 79	10,823	1.0% (+110)
Unknown	379	623	60.8%	Unknown	623	2.1% (+13)
Grand Total			75.0%	Grand Total		1.2% (+2,619)

COVID-19 Vaccination Programme

Improving access to increase coverage



Examples of communications and engagement activity

Bespoke tailored and targeted communications

Neighbourhood specific information, designed with Sounding Board, disseminated through partners' communications channels. Activities include:

- Conversations with community leaders and residents particularly with the Black African community;
- Imams and Community Leaders (including volunteers) actively engaged in promoting key messages with GP support;
- Engagement with homeless accommodation providers;
- Coverage in community press and radio and information produced in a range of languages.

Care home survey work

A survey for care home staff has been launched. It seeks views of staff who have both had their vaccine – to see what influenced them; and those who have so far declined to book their vaccine – to see what might be a barrier that we can help influence.

It also includes some demographic information to allow us to look at other factors

The survey launched on 22 April and has received an encouraging 150+ responses with in the first few hours of circulation.

Webinars have been held with homes with less than 70% staff vaccinated.

'Operation Engage'

Targeted door knocking in Cheetham and Crumpsall, and Moss Side has been carried out, led by front line staff in the community.

Volunteers identified by the Health Development Coordinators will carry out the work, with support from multi faith organisations, frontline workers and MLCO and MCC neighbourhood teams.

They are seeking to engage with those who have not yet responded to contact, or have been uncontactable to date, and link them up with a vaccination offer.

19

COVID-19 Vaccination Programme

Communications snapshot

